



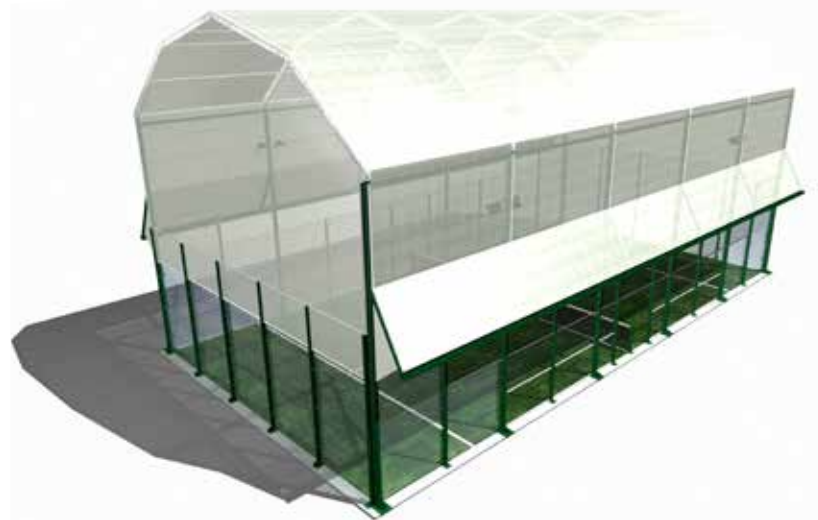
TECHNICAL DATACARD

INTEGRATED COVERING PADEL STRUCTURE

Three features have been taken into account for the integrated cover developed by Sky Padel: aesthetics, functionality and economy.

INTEGRATED COVERING PADEL STRUCTURE CONSISTS OF:

- 12 structural pillars measuring 140x80x8mm and 6 m high, with 300x300 anchor plates and chemical anchors for anchoring to the footing.
- Pillars lacquered in the oven with powder coating at 200°C, ensuring a coating thickness higher than 100 microns and a perfect waterproofing of the structure.
- **It is possible to paint pillars and meshes in different colors.**
- Extruded aluminum gantries and straps for awning cover support.
- Side awnings to avoid wind-driven rain fully integrated into the structure of the paddle court.
- Ultramodern PVC awning, translucent 650 gr/m² with M2 fire resistance and treatment against UVA radiation.
- Latest generation micro-perforated awning to cover the gable ends. It is fixed to the paddle court's pillars providing lower wind resistance, greater luminosity, and ventilation of the volume contained within the cover.



www.skypadel.com

Several months of technical development and aesthetic adjustments have been required to create and launch a unique integrated padel cover on the market. It has been specifically designed for padel courts and to withstand winds up to 100 km/h.